

ORPHEUM THEATRE

TECHNICAL PACKAGE



Orpheum Technical Package
200 N. Broadway, Suite 330
Wichita, KS 67202
316-263-0884

1. Partial Hemp House. This means sandbags. Each batten has a weight capacity of 600 pounds. Dedicated electrics on electric hoists with a load capacity of 1000 pounds.
2. Pipe Diameter is non-standard size (2.5 inches). We have 10-10' sections of 2" under hang pipe. Dedicated electrics are standard 2" size. Please let your LD know if you plan on bringing your own lighting instruments.
3. Grid: height is 60 feet. Large "C" channel beams make up the 3 "wells" at center and 15 feet to right and left. These are load bearing for rigging.
4. Loading Dock: No dock, doors at street level USL. Ramp from truck and ramp to stage. Stage is 30" below street level. Push distance from end of truck ramp down to stage is under 30 feet. Two ramp wide capacity at loading door with two house ramps from street to USL in place and routinely used. Please bear this in mind when determining crew needs.
5. Trucks park in southbound, one-way alley directly east of the theatre. Bus location TBD depending upon the number of buses. But there is ample space adjacent to building. No shore power or bus water in any location.
6. Dressing rooms and production office: Four dressing rooms downstairs directly below the stage along with one large chorus room (often times used as hospitality room). **No elevator**. Access from stage right and left and may be used as crossover. Small room (8' x 10') off mid-stage left may also be used as quick change or production office.
7. Lighting: All stage lighting is LED lighting fixtures. Lighting patch and circuiting as indicated on the attached plot. We have an ETC Ion light board with 20 fader wings. DMX is networkable with multiple universes available. Balcony trees are 55 feet from DS. Front of House truss throw is approx. 85 feet from Plaster line.
8. Spots: 2 Robe Forte remote spots. Throw Positioned approx. 85 feet from Plaster line on FOH Truss in Center positions. Control positions are Backstage above SR stairs.
9. Stagehands: Union Stagehand required by all.
10. Proscenium is 40'w x 28'h. Stage depth is 28 feet. 8' curved thrust over capped orchestra pit.

11. Audio: Stacks, racks and boards provided as needed by Josh Gordon of Event Systems, Inc., 316-641-1848, josh@eventsystemsinc.com. Numerous analogue and digital boards from which to choose.

Installed loudspeaker system includes:

Left and Right Line Array

(10) D&B CCL per side
D20 powered
Array Processed

Front Fill

D&B T Frontfill
D20 powered

Under Balcony Fill

(4) D&B
D20 Powered

Subs

(2) D&B KSL
D40 powered

Monitors

4 mixes

(6) boxes of D&B M4

D20 Powered

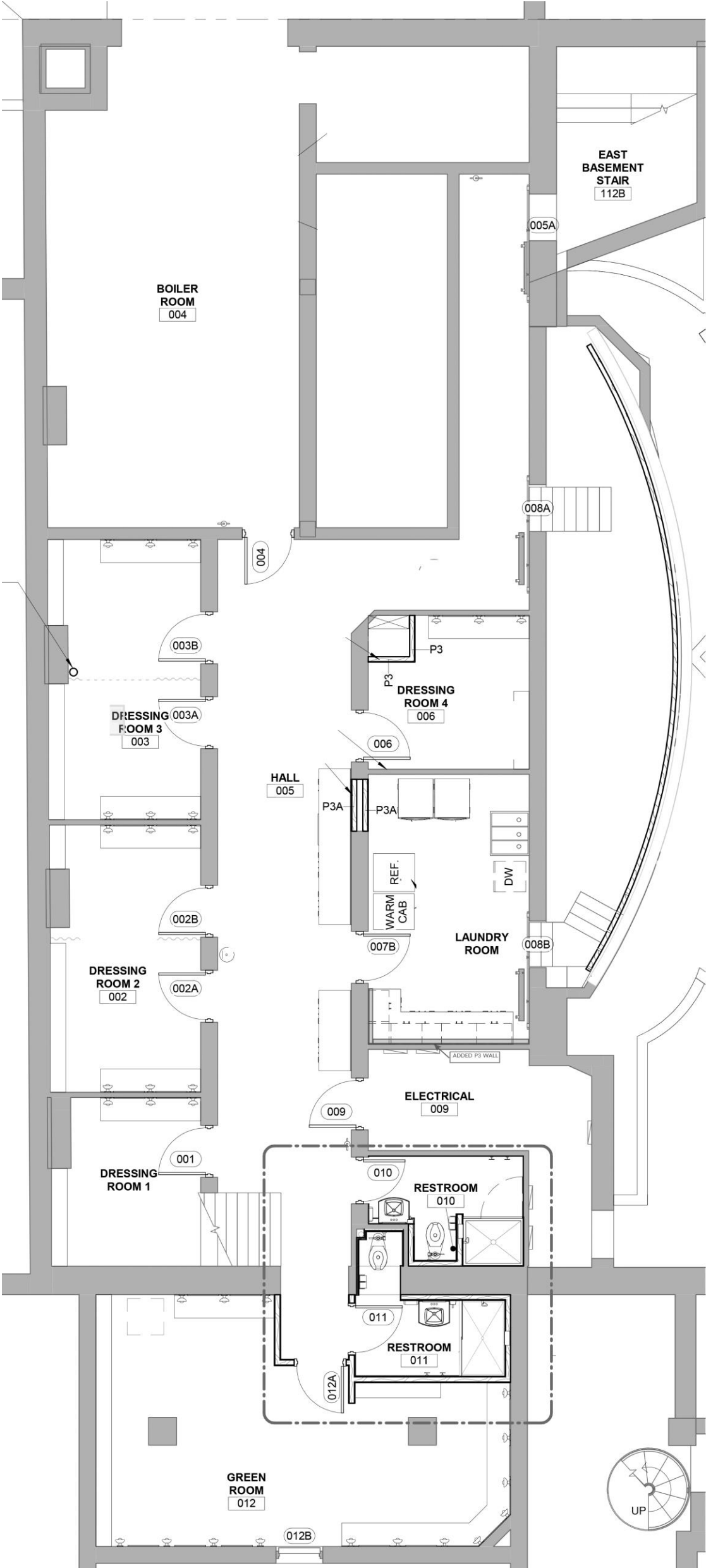
FOH Console

Yamaha DM7-EX

Other consoles available with advance

Lineset Schedule

Set	Name	Position from Plasterline	Batten Length	High Trim	Capacity (in Pounds)	Type
0	FOH Truss		40'	50'	2000#	Self-climbing
1	Decorative Valance	0'0"	45'	N/A	N/A	Dead Hung
2	Decorative Grand Drape	1'8"	45'	56'	1000#	Variable Motor
3	Downstage Traveller	3'0"	40'	54	800#	Hemp
4	Movie Screen	4'0"	40'	54	800#	Hemp
5	Electric 1	4'8"	54'	30	2000#	Motor
6	Utility	6'2"	40	54	800#	Hemp
7	Border 1	6'10"	40	54	800#	Hemp
8	Legs 1	7'6"	40	54	800#	Hemp
9	Utility	8'2"	40	54	800#	Hemp
10	Electric 2	8'10"	54	30	2000#	Motor
11	Utility	10'2"	40	54	800#	Hemp
12	Border 2	10'10"	40	54	800#	Hemp
13	Legs 2	11'9"	40	54	800#	Hemp
14	Utility	12'3"	40	54	800#	Hemp
15	Border	12'10"	40	54	800#	Hemp
16	Small Projection Screen	14'2"	40	54	800#	Hemp
17	Border3	15'6"	40	54	800#	Hemp
18	Midstage Traveler	16'2"	40	54	800#	Hemp
19	Electric 3	16'10"	54	30	2000#	Motor
20	Utility	18'5"	40	54	800#	Hemp
21	Border 4	19'6"	40	54	800#	Hemp
22	Legs 4	20'2"	40	54	800#	Hemp
23	Utility	20'10"	40	54	800#	Hemp
24	Utility	21'9"	40	54	800#	Hemp
25	Utility	22'10"	40	54	800#	Hemp
26	Border	23'6"	40	54	800#	Hemp
27	Utility	24'5"	40	54	800#	Hemp
28	Electric 4	26'	54	30	2000#	Motor
29	Scrim	27'6"	40	54	800#	Hemp
30	Full Black	27'10"	40	54	800#	Hemp



Notes on Parking at the Orpheum Theatre
200 North Broadway, Wichita, KS 67202

1. The Orpheum sits on the NE corner of 1st & Broadway.
Broadway is a two-way street, 1st Street is one-way east bound. 2nd Street is one-way west bound. Not shown on this map is 3rd Street which is a two-way street two blocks north of the theatre. Helpful to know this when figuring out ingress, especially for semis and trailers. Topeka (one block east of Broadway) and Market (one block west of Broadway) are both two-way.
2. Semis and production trailers will park in the alley directly east of the theatre. This alley is one-way, southbound and can be accessed from either 2nd or 3rd streets depending upon how the rig(s) approach the theatre. Bias the rig to the east and it will easily clear the old school fire escape attached to the theatre.
3. Additional vehicle parking is directly North of the Theatre in the parking spaces along the building. These are most commonly used for tour buses and provide ready access to stage doors.
4. For tours with multiple tractor trailers and/ or tour buses, additional parking can be arranged. Please let the House Manager and Theatre Director know as soon as possible for arrangements and directions.
5. Please contact the Theatre Director or House Manager for specific parking directions well in advance of your arrival.