

ORPHEUM THEATRE

TECHNICAL PACKAGE



Orpheum Technical Package
200 N. Broadway, Suite 330
Wichita, KS 67202

316-263-0884

Orpheum Tech Specs Video Overview:

<https://youtu.be/5pCEqsqKHNk>

1. Hemp House. Yes this means sand bags. Each batten has a weight capacity of 800 pounds.
2. Pipe Diameter is non-standard size (2.5 inches). We have 8-10' sections of 2" under hang pipe. Please let your LD know if you plan on bringing your own lighting instruments.
3. Grid: height is 60 feet. Large "C" channel beams make up the 3 "wells" at center and 15 feet to right and left. These are load bearing for rigging.
4. Loading Dock: No actual dock, doors at street level USL. Ramp from truck and ramp to stage. Stage is 30" below street level. Push distance from end of truck ramp down to stage is under 30 feet. Two ramp wide capacity at loading door with two house ramps from street to USL in place and routinely used. Please bear this in mind when determining crew needs.
5. Trucks park in southbound, one-way alley directly east of the theatre. Bus location TBD depending upon the number of buses. But there is ample space adjacent to building. No shore power or bus water in any location.
6. Dressing rooms and production office: Four dressing rooms downstairs directly below the stage along with one large chorus room (often times used as hospitality room). No elevator. Access from stage right and left and may be used as crossover. Small room (8' x 10') off mid-stage right may also be used as quick change or production office.

7. Lighting: All dimmers are on the pipes "smart bars" and are circuited 1-1 as indicated on the attached plot. We have an ETC Ion light board with 20 fader wings. A second universe, and a second run of DMX cable, run from SL to SR. Balcony trees are 55 feet from DS.
8. Spots: Two Lycian Super Arc 400. Positioned 100 feet from DS high in the balcony left and right. Use of single spot for solo shows not advised.
9. Stagehands: Union Stagehand required by all.
10. Proscenium is 40' x 28'. Stage depth is 28 feet.
11. Audio: Stacks, racks and boards provided as needed by Josh Gordon of Event Systems, Inc., 316-641-1848, josh@eventsystemsinc.com. Numerous analogue and digital boards from which to choose. Installed loudspeaker system includes:

Left and Right Line Array

- (9) L-Acoustics KIVA
 - (3) L-Acoustics SB15m LA8 powered
- Certified Provider

Front Fill

- (5) L-Acoustics 5XT
- LA8 powered

Under Balcony Fill

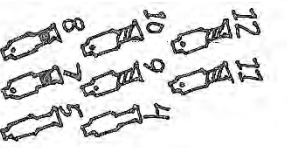
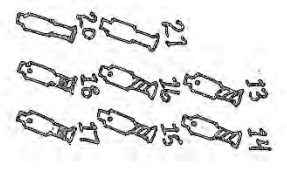
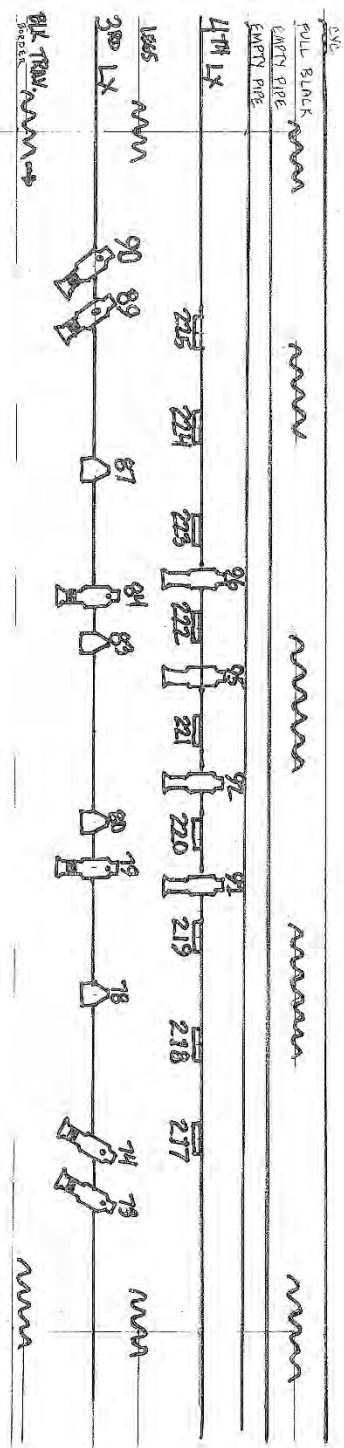
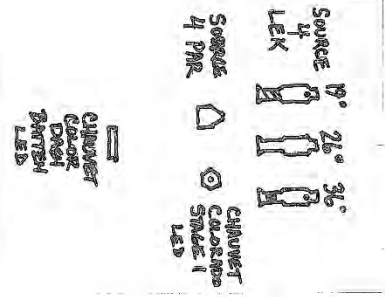
- (4) L-Acoustics 8XT
- LA8 powered

Subs

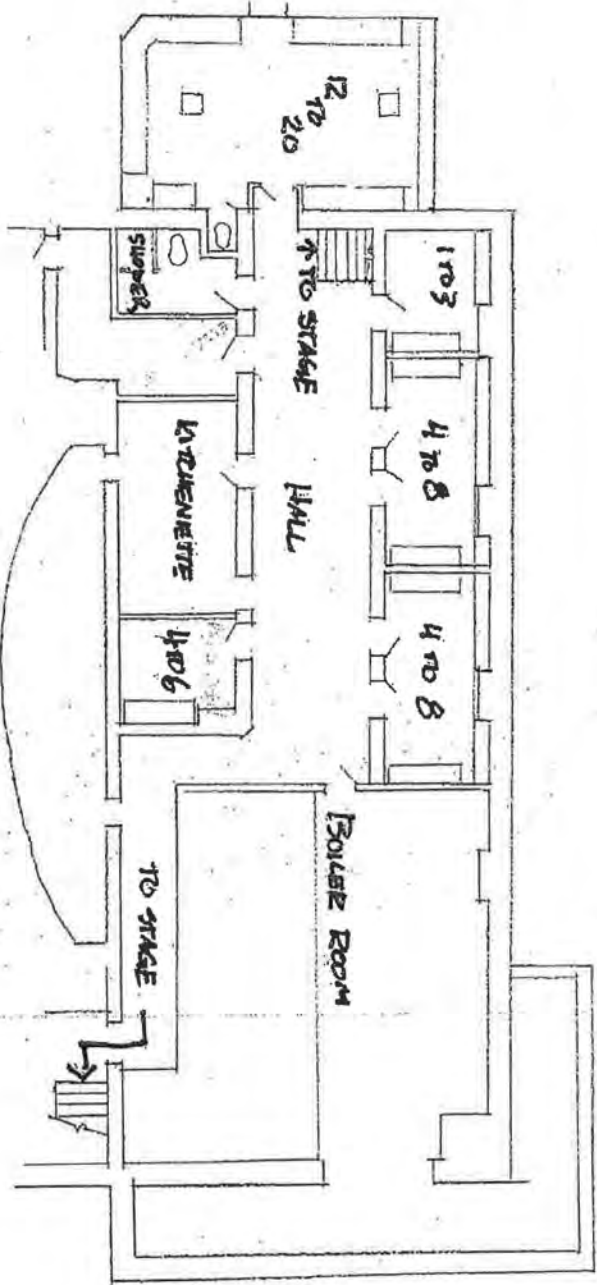
- (4) L-Acoustics SB18
- LA8 powered

Wichita Orpheum Lineset Schedule

Line 1	Grand Drape	1 foot 4 inches from plaster line
Line 2	Empty Pipe	2 foot 10 inches
Line 3	1st Electric	4 foot 3 inches
Line 4	Black Traveler	5 foot 7 inches
Line 5	Movie Screen	6 foot 8 inches
Line 6	Black Border	7 foot 9 inches
Line 7	Empty Pipe	8 foot 4 inches
Line 8	2nd Electric	9 foot 5 inches
Line 9	Black Legs	10 foot 10 inches
Line 10	Work Lights	11 foot 10 inches
Line 11	Empty Pipe	13 foot 1 inches
Line 12	Empty Pipe	14 foot 4 inches
Line 13	Black Border	16 foot 2 inches
Line 14	Black Traveler	16 foot 6 inches
Line 15	3rd Electric	18 foot 9 inches
Line 16	Black Legs	20 foot 3 inches
Line 17	Empty Pipe	21 foot 3 inches
Line 18	4th Electric	22 foot 4 inches
Line 19	Empty Pipe	22 foot 11 inches
Line 20	Empty Pipe	23 foot 8 inches
Line 21	Full Black Drape	24 foot 7 inches
Line 22	White Cyclorama	25 foot 7 inches



ORQUEM THÉÂTRE 2015 : BELOW STAGE : DRESSING ROOMS



Leaf : 3

Notes on Parking at the Orpheum Theatre
200 North Broadway, Wichita, KS 67202

1. The Orpheum sits on the NE corner of 1st & Broadway. Broadway is a two-way street, 1st Street is one-way east bound. 2nd Street is one-way west bound. Not shown on this map is 3rd Street which is a two-way street two blocks north of the theatre. Helpful to know this when figuring out ingress, especially for semis and trailers. Topeka (one block east of Broadway) is one-way south bound.
2. Semis and production trailers will park in the alley directly east of the theatre in the space noted as Vehicle # 1. This alley is one-way, southbound and can be accessed from either 2nd or 3rd streets depending upon how the rig(s) approach the theatre. Bias the rig to the east and it will easily clear the old school fire escape attached to the theatre.
3. Additional vehicle parking is noted as Vehicle #2 and Vehicle #3. These are most commonly used for tour buses and provide ready access to stage doors.
4. For tours with multiple tractor trailers and/ or tour buses, additional parking is located in the lot to the east and north of the venue, marked as Vehicle #4.
5. Please contact the theatre director or technical director for specific parking directions well in advance of your arrival.



NO TOUR PARKING
IN THIS LOT
MONDAY-FRIDAY.
DETAILS ABOUT
SPECIFIC PARKING
ARRANGEMENTS
AVAILABLE AT
ADVANCE.

Brown
Parking
Garage.

Orpheum
200 N Broadway
Wichita KS.

Vehicle# 1

Vehicle# 2

Vehicle# 3

Vehicle# 4

1st Street

N. Broadway

N. Topeka